

## Change Notice

# Dimension Changes to MRK Shaft Actuator

Type of Change:

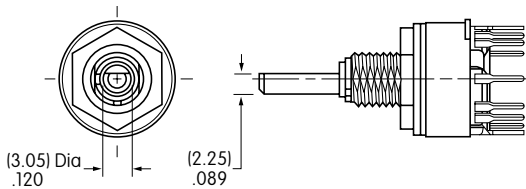
- Engineering     Part Number
- Product         Appearance

The MRK switches have had modifications to the shaft actuator at the base and at the end. The changes have been implemented to improve the fit of the knobs and better meet our customers' needs. These changes affect MRK112, MRK206 and MRK403 standard as well as custom rotaries.

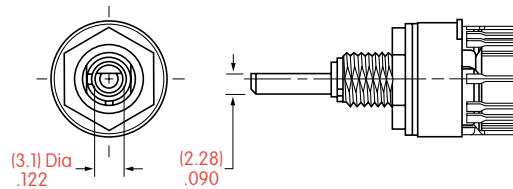


MRK Rotary

MRK Shaft Before Changes



MRK Shaft After Changes



### Change of Actuator Dimensions

Part No.	From Current Base of Shaft (Diameter)	To New Base of Shaft (Diameter)	From Current End of Shaft	To New End of Shaft
MRK112	3.05mm, .120"	3.1mm, .122"	2.25mm, .089"	2.28mm, .090"
MRK206				
MRK403				

### Availability

MRK of the MR Series with modified shaft dimensions will be available with March 2009 production.

**Nihon Kaiheiki Ind. Co., Ltd.**

715-1 Unane, Takatsu-ku, Kawasaki-shi, 213-8553, Japan  
Telephone +81-44-813-8008 • Fax +81-44-813-8038



www.nikkaiswitches.com